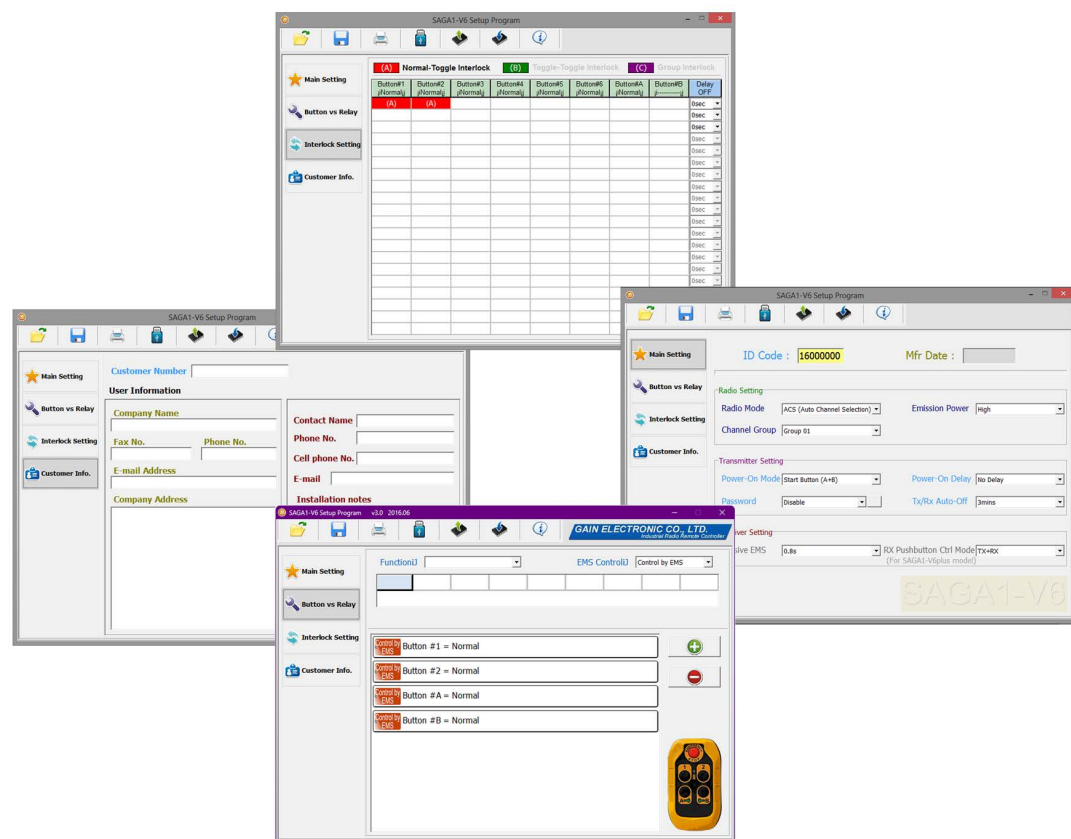


## PROGRAMMING SOFTWARE



Each remote control can be customized in its operations through a practical and useful programming interface Software.



# NUOVACEVA

AUTOMATION



### Transmitter Shockproof

The transmitter is equipped with a protective bumper, the extremely small size dimensions make it easy portability.

The product works with 2 AA batteries to 1.5 VDC ensuring a long continuous transmission (button pressed) up to 150 hours.

## SAGA V6-4 RADIO REMOTE CONTROL

*A new remote control for functions control on automotive vehicles*

Saga V6 is the new Radio Handheld Series SAGA to manage the various applications of radio controls on self-propelled vehicles.

It is, in fact, designed to be installed in trucks and/or equipment for the industry where it is necessary to control certain functions by radio control. It is used especially in the industrial sectors for the manufacture of:

- hook
- self rescue
- platforms
- automated platforms
- trolleys towing DC
- crawler tracks for agricultural use

**NUOVACEVA**  
AUTOMATION

NUOVA CEVA AUTOMATION S.R.L.  
via Don Signini 43 - 28010 - Briga Novarese - NO - ITALY  
Phone +39 0322 93574  
[info@nuovaceva.it](mailto:info@nuovaceva.it) [www.nuovaceva.it](http://www.nuovaceva.it)



## GENERAL FEATURES

- Multifrequency PLL Radio with 3 settings systems: fixed frequency, LBT (auto channel selection at start), ACS (auto channel selection continuous)
- Frequency from 869.700 MHz to 870.000
- Operating temperature -40° +85° C
- Range up to 100 meters in open field
- ID Code 32 bit
- CRC error correction method with "cyclic redundancy check"
- EC Regulation: EN 60950-1 / EMC - EN 301 489/01 - EN 301 489/3 / Radio - EN 300 220-1 - EN 300 220-2
- Global approvals: R&TTE



## TRANSMITTER TECHNICAL FEATURES



- H x W x D = 79 x 46 x 24 mm
- Weight = 57 g (without batteries)
- IP66
- Power Supply 2 x AA 1.5 Vdc
- Transmission power is adjustable in 3 levels = 1 mW - 3.2 mW - 10 mW
- Maximum current consumption 30 mA
- Consumption in "standby" 1.5 micro A
- Security control buttons down
- Power battery level LED indicator

## RECEIVER TECHNICAL FEATURES

- H x W x D = 130 x 146 x 64 mm
- Weight = 490 g
- IP66
- Power supply 10-42 Vdc
- Consumption to 24 Vdc 24 mA in standby + 50 mA for each relay activated
- 1 relay stop
- 8 control relay contact N.O.
- Relay contacts rated at 16 Vdc 20 A
- Voltage isolation 15 KV



## ACCESSORIES

### PROTECTIVE COVER

Protective silicone rubber cover, to prevent damage from hit and falls



### STRAP WITH HOOK



Practical strap with safety hook for belt or shoulder strap applications

### WIRING CABLE

The receivers are already equipped with a numbered wiring cable corresponding to each function.

