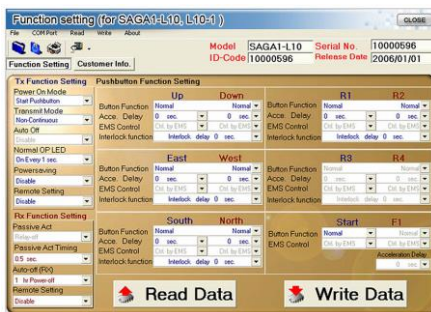




## 8 Pushbuttons Radio Remote Control: the first step for self-erecting cranes' and bridge cranes' control

- Strength guaranteed by a water resistant and shock resistant enclosures
- Modern design; pocket size and light weight (200g)
- Extremely long battery life: 300 hours of continuous transmission
- Designed for mobile and industrial application
- Programmable special functions



### Special functions settable by software:

- Interlock between each couple of buttons
- One-button toggle switch function
- Two-button toggle switch function
- Start at any pushbuttons
- Continuous or not continuous transmission mode
- Auto power off
- Energy saving mode
- Control of DUAL MOTORS systems
- Up to 4 speeds commanded by a single button

## General Features

- **Frequency** FM 433.0825/434.6875 Mhz
- **Radio module:** 1-channel quartz oscillator
- **Operating temperature** -45°C + 80°C
- **Operating distance** up to 100m
- **Hamming distance** >4
- **ID codes** over 4,1 billions (32 bit)
- **Enclosures** nylon + glass fiber (IP65 equivalent)
- **EC Regulation:** EN 60950 / EMC - EN 301 489/03 - EN 61000/6/2 / - EN 300 220/3
- **Global approvals:** F.C.C. / RSS210 / R&TTE / L.V.D.



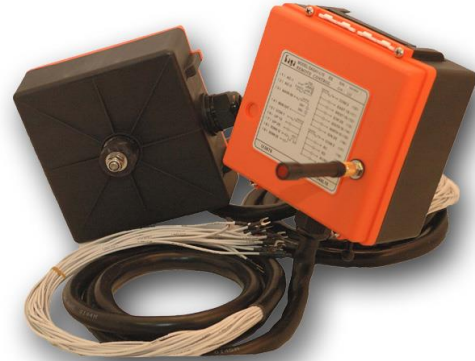
## Transmitter Technical Features

- **L x W x H** = 163 x 49 x 45 mm
- **Weight** 200 g (without battery)
- **Power supply** 2 AA size 1,5 V
- **RF output power** <4mW
- **Max. Current Consumption** 10 mA
- **Standby current** less than 1 micro A
- **Jammed button** detection
- **Low battery** indicator
- **Start key switch** and stop mushroom button



## Receiver Technical Features

- **L x W x H** = 167 x 154 x 88 mm
- **Weight** = 1400 g (without cable)
- **Power supply** 12/24 Vac/dc - 48-220 Vac
- **Current consumption** at 24 Vac/dc - 31 mA on stand by – 128 mA ON - 16 mA for each activated relay
- **Realy contacts** 250 Vac - 10 A
- **Insulation voltage** 15 KV



## Accessories

### Receiver fixing

Standard equipment with 4 shock absorber mount

### Wiring

Standard connection cable wired



### Cover

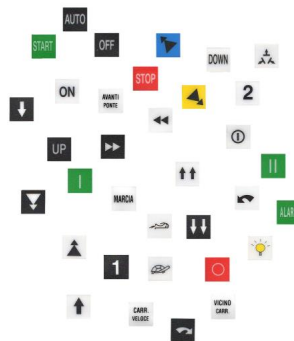
Standard provided with a practical case belt clip

### Strap

A handy wrist strap for added security while using

### Stickers

Standard interchangeable serigraph



### Remote type antenna

Antenna is easily remotable with BCN connector

Transmitter and Receiver Standard Equipment

The following kits are composed of transmitter + receiver with 1,5 m pre-wired cable + transmitter protective cover:

- SAGA-L10-1 Receiver supply voltage 12/24 Vac/dc
- SAGA-L10-1-220 Receiver supply voltage 110/220 Vac



Available in different configurations: 2-4-6-8 buttons

**L10-1** – stop with 2 safety contacts -  
1 start contact - 8 n.o. output contacts commanded by 8 single-speed buttons



1 point shock absorber mount

SAGA-L10-1-TX Transmitter Unit

SAGA-L10-1-RX Receiver Unit

The following kits are composed of transmitter + receiver with 1,5 m pre-wired cable + transmitter protective cover:

- SAGA-L10 Receiver supply voltage 12/24 Vac/dc
- SAGA-L10-220 Receiver supply voltage 110/220 Vac



Available in different configurations: 2-4-6-8 buttons

**L10** – stop with 2 safety contacts -  
1 start contact - 13 n.o. output contacts commanded by 8 double-speed buttons



1 point shock absorber mount

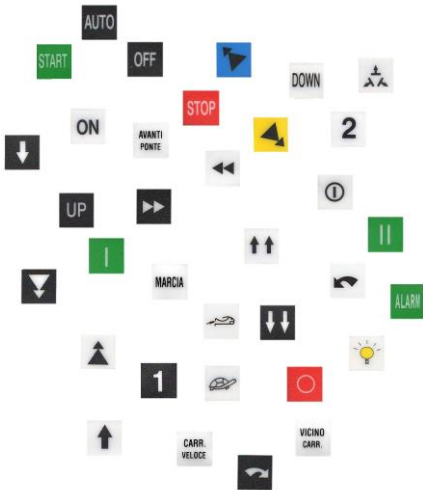
SAGA-L10-TX Transmitter Unit

SAGA-L10-RX Receiver Unit

Optional Items

**Battery charger**

To recharge AA 1,2V  
**Recharge batteries**  
2500 mA



**Stickers**

Customized serigraph are available on demand

**Antennas**

Cable to remotely locate the antenna when the receiver is installed inside a control cabinet

Dipole antenna to increase the reception up to 150m in open field



**Program Kit**

With software and copier module